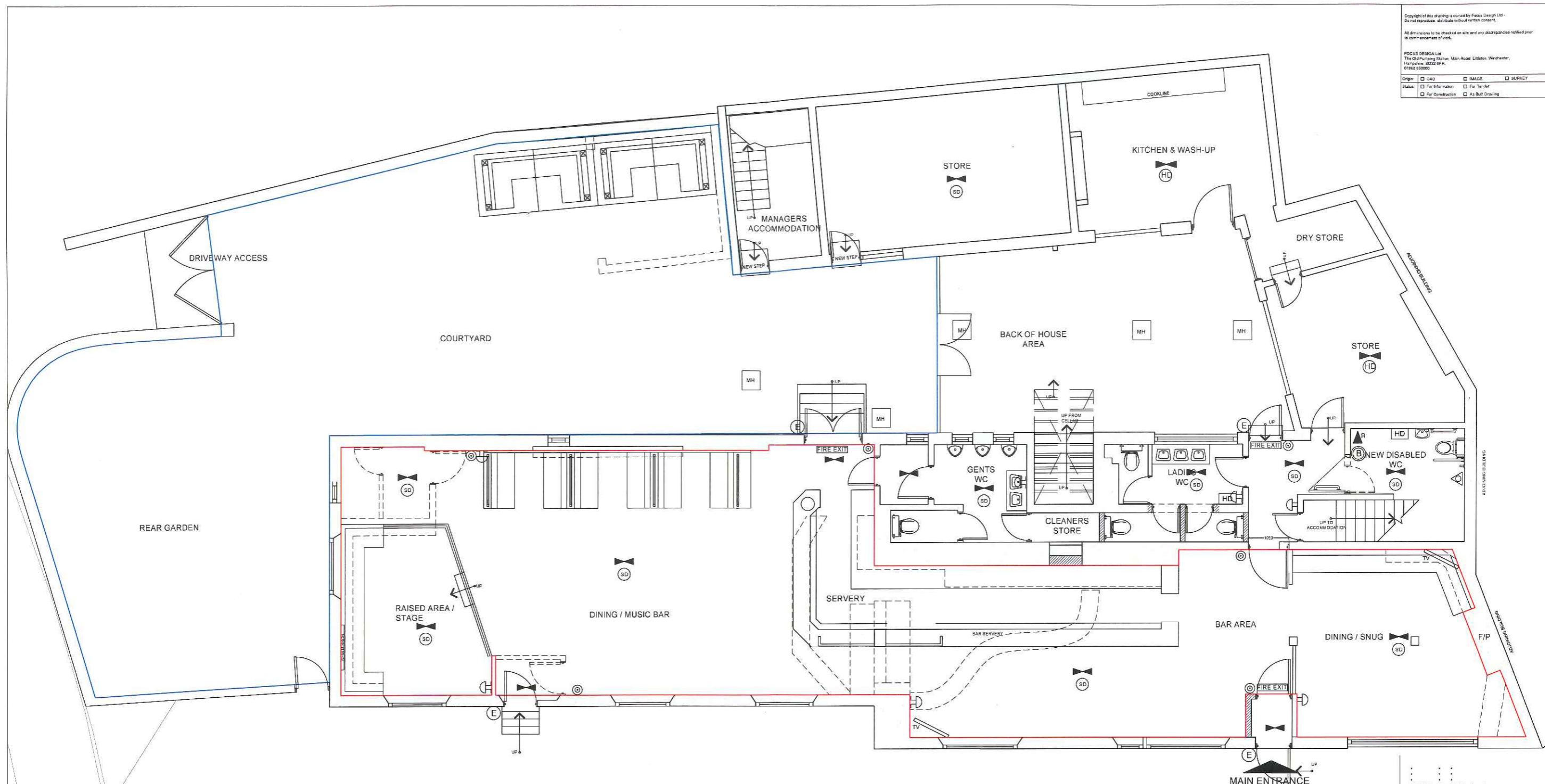


Copyright of this drawing is owned by Focus Design Ltd - Do not reproduce, distribute without written consent.
 All dimensions to be checked on site and any discrepancies notified prior to commencement of work.

FOCUS DESIGN Ltd
 The Old Pumping Station, Main Road, Littleton, Winchester, Hampshire, SO22 5PR, 01963 855000

Origin: CAD IMAGE SURVEY
 Status: For Information For Tender For Construction As Built Drawing



FIRE SAFETY KEY			
	3 HR MAINTAINED ILLUMINATED EMERGENCY EXIT SIGN		HEAT DETECTOR
	3 HR MAINTAINED ILLUMINATED DIRECTIONAL EXIT SIGN		FIRE ALARM BREAK GLASS POINT
	FIRE ALARM INDICATOR PANEL - POSITION TO BE APPOINTED		FIRE ALARM SOUNDER
	3 HR NON-MAINTAINED EMERGENCY LIGHT FITTING		BEACON LIGHT (FLASHING LIGHT TO INDICATE FIRE ALARM)
	EXTERNAL EMERGENCY LIGHT		DISABLED ALARM
	SMOKE DETECTOR		DISABLED ALARM INDICATOR
			FIRE BLANKET IN CONTAINER
			CARBON DIOXIDE FIRE EXTINGUISHER
			9 LITRE WATER EXTINGUISHER
			WET CHEMICAL EXTINGUISHER
			FOAM FIRE EXTINGUISHER
			LINE OF LICENSED AREA
			LINE OF EXTERNAL LICENSED AREA

01.03.17	C	Updated layout
31.01.17	B	Licensing area to garden
30.01.17	A	Loose furniture omitted
DATE	REV	COMMENTS
FOCUS DESIGN		
CLIENT GREENE KING		
PROJECT THE RED LION 1 MILL LANE GODALMING GU7 1HF		
DRAWING TITLE LICENSING PLAN		
SCALE: 1:50 @ A1		
DATE: JAN '17	DRAWN BY: EL	
GK034.16.L01		C